



EDUCATION  
FOUNDATION  
OF PALM BEACH COUNTY

# CAPITAL CAMPAIGN OVERVIEW



Brick by Brick  
Mind by Mind

## TABLE OF CONTENTS

3

Letter from  
CEO/President

8

Campaign Donors

4

Our Mission & Values

9

Naming Opportunities

5

The Why

11

Fundraising Updates

6

The Plan

12

Milestones

7

Campaign Leadership

13

Campaign Progress

“

“One of my students had a very unstable home life. I was able to provide a backpack filled with supplies and personalized the backpack with vinyl. All the supplies and materials came from the Red Apple Supplies program. That student is now in high school and sent me a picture of the backpack I had given to her. It changed her attitude and helped her realize there were people who were there to care about her as more than just a student.”

~ Susan Heckman, West Gate Elementary



## ASPIRATION, ACHIEVEMENT, AND APPRECIATION

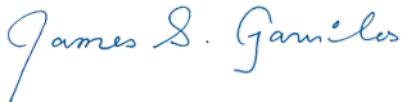
I am pleased and delighted to be able to share with you this overview of our *Brick by Brick, Mind by Mind* campaign; to share with you in more detail the story of what has been a remarkable act of generosity and momentum for our Education Foundation.

When we embarked together on a capital campaign just one year ago, we did so because the Education Foundation needs to continue meeting the needs of today's students and the dedicated educators throughout our community.

We began with an ambitious goal of raising \$15 million, and with great determination and optimism, we discovered our community has been waiting for an opportunity for just such a collective initiative.

The *Brick by Brick, Mind by Mind* story is about you and all you have done as a member of this closely connected and unified community. You have transformed hope into impact, ambition into action, creativity into innovation, and most importantly, you will transform learners into leaders.

With very best wishes and utmost gratitude,



James S. Gavrilos  
President/CEO



## OUR MISSION

The Education Foundation of Palm Beach County is the nexus of Palm Beach County public-school system, the private sector, and the community. The Education Foundation facilitates student achievement by supporting high-quality public education through partnerships, grants, events, and public awareness.

## OUR VALUES

Every day, we strive to raise the bar, the dialogue, and the expectations to achieve the Gold Standard. We achieve the Gold Standard by living our values:

### RESPECT

We value the thoughts and opinions of others



### ACCOUNTABILITY

We do what we say we will



### INTEGRITY

We do the right thing



### TRANSPARENCY

We create trust and dialogue with our stakeholders



## THE WHY

Like bricks stacking upon bricks, knowledge is built. Children must first learn the “ABCs” to read, and must learn to read to allow them to write, research, and reason. Learning is constructed – *knowledge building upon knowledge*.

The Education Foundation of Palm Beach County empowers public education by supplying the builders – the district’s schools and educators – with the essential materials required for the task. From awarding grants that support innovative programs and scholarships to providing necessary school supplies and resources from Red Apple Supplies, the Foundation’s signature program, the Education Foundation plays an integral role in supporting the vital development of over 180,000 students in The School District of Palm Beach County, representing the future of our community.



“I never imagined how much we would need this new facility only eight years after launching Red Apple Supplies because of its incredible growth and success. Red Apple Supplies will have grown from distributing \$60,000 in school supplies to nine Title I schools in 2016, to distributing over \$1.8 million to 91 schools by the end of the 2023-2024 school year. This new building will enable us to achieve our goal of eventually serving all 182 public schools in The School District of Palm Beach County.”



**Meredith Trim**  
President of Ventus Charitable Foundation  
and Founder of Red Apple Supplies

## THE PLAN

While this plan is focused on the fundraising effort, the campaign affords an unmatched opportunity to tell the larger story of our aspirations. We seize that opportunity as we seek to engage stakeholders – both internal and external – in fulfilling our mission and achieving our vision.

The *Brick by Brick, Mind by Mind* campaign is at a tipping point where philanthropy can make a profound difference in our ability to contribute to a better Palm Beach County.



## CAMPAIGN LEADERSHIP

Members of the *Brick by Brick, Mind by Mind* Campaign Task Force provide strategic oversight and guidance and serve as key ambassadors and advocates to ensure the success of the most ambitious fundraising campaign in the Foundation's history. This group of dedicated community leaders devote their time and energy to planning and creating a future for our students, teachers, schools, and community.



**Jorge Fuentes**  
Song + Associates,  
Inc.



**Ken Kahn**  
LRP Media Group



**Max Macon**  
Florida Power &  
Light Company



**Jim Moore**  
UnitedHealthcare



**Jordan Paul**  
NAI/Merin Hunter  
Codman, Inc.



**Juan Tagle**  
Palm Beach Capital



**Michael Thomas**  
The Weitz Company



**Meredith Trim**  
Ventus Charitable  
Foundation

# CAMPAIGN DONORS

## LEADERSHIP GIFTS

*\$1,000,000 TO \$5,000,000+*

Ventus Charitable Foundation  
The Frederick A. DeLuca Foundation  
FPL through its NextEra Energy Foundation  
Jana and Ken Kahn  
Wanda and James Moran Foundation

## MAJOR GIFTS

*\$100,000 TO \$999,999*

Solid Waste Authority of Palm Beach County  
Stiles-Nicholson Foundation  
Lost Tree Foundation  
Ruth and Hal Lauenders Charitable Trust  
Laura Trim

## SUPPORTING GIFTS

*UP TO \$99,999*

Alan Baseman  
Amy Lane  
Angel Adams  
Art & Carole Stall  
Ashish Gupta  
Barrat Family Fund  
Brian Landrum  
Brian Seymour  
Carrier  
Charles Sieving  
Christopher Chapel  
Clayton Tadler  
Darryl Wilson  
David Porges  
David Reuter  
Deborah Caplan  
Dr. Becky Youngman  
Dr. Glenda Sheffield  
Edward Tierney  
Ellen Bishop  
Eric Silagy  
Ezra Krieg  
Frank Compiani  
George Forman  
George H. & Kary B. Prueger  
Greg Schwinghammer

Jack Skolds  
James Camaren  
James Gavrilos  
James May  
Jennifer Ethridge  
Jezerinac Group, PLLC  
Jim Moore  
John Bowers  
John Burnett  
John Ketchum  
John-Anthony Boggess  
Jordan Paul  
Jorge Cabrera  
Jorge Fuentes  
Juan Tagle  
Julie Houston Trieste  
Karen Brill  
Kelly Smallridge  
Ken Gomulka  
Kenneth Dunn  
Kenneth Hoffman  
Kimberly Lea  
Kimberly Reckley  
Lauren Marcum  
Lawrence Silverstein  
Leanne Evans

Lisa King  
Lisa Park  
Lloyd Evans  
Luke Kurtz  
Manuel Miranda  
Mark Busse  
Mark Hickson  
Mark Maisto  
Mark Thompson  
Marko Serrano  
Marty Cass  
Matthew Handel  
Matthew Roskot  
Matthew Valle  
Max Macon  
Merdochey LaFrance  
Meredith Trim  
Michael Burke  
Michael DeBock  
Michael Kohner  
Michael Sole  
Michael Thomas  
Miguel Arechabala  
Mike Pych  
Mitch Ross  
Nadege Bernard

Naren Gursahaney  
Nicole Daggs  
Pam Rauch  
Paul Cutler  
Philip Musser  
Ray Titus  
Rebecca Kujawa  
Rita Shearon  
Robert Coffey  
Ronald Reagan  
Ronnie Boriskin  
Rudy Schupp  
Sam Pasley  
Scott Bores  
Sophia Nelson  
Stephen McBride  
Tanya Siskind  
Tarneisha Hatten  
Teresa West  
Terrell Crews  
The Breakers Palm Beach  
Timothy Oliver  
TJ Tuscai  
Troy Rice  
Val Perez

# NAMING OPPORTUNITIES

Room / Area	Value	Total # of Opportunities	Available
Red Apple Supplies Showroom / Store	\$6,000,000	1	SPONSORED
Exterior Building Naming	\$5,000,000	1	1
Primary Entry Lobby / Atrium	\$1,000,000	1	SPONSORED
Community Event / Training Room	\$1,000,000	2	1
CORE Supply Section at Red Apple Supplies	\$1,000,000	1	SPONSORED
Teacher Shop Drive-Thru / Curbside Pickup	\$500,000	1	SPONSORED
Reception Area	\$500,000	1	1
Front Office Conference Room	\$500,000	1	1
Warehouse	\$500,000	1	1
Staging Area	\$250,000	1	1
CEO/President Office	\$100,000	1	SPONSORED
Kitchen Area / Breakroom	\$100,000	2	2
Volunteer Breakroom	\$100,000	1	1
Open Work Area	\$100,000	1	1
Specialty Section (STEM, Literacy, etc.) at Red Apple Supplies	\$50,000	10	8
Red Apple Supplies: Warehouse Director Office	\$25,000	1	1
Red Apple Supplies: Store Manager Office	\$25,000	1	1
Red Apple Supplies: Volunteer Manager Office	\$25,000	1	SPONSORED
Staff Offices	\$25,000	7	7
Park Bench	\$10,000	3	SPONSORED
Garden	\$10,000	1	SPONSORED
Shopping Carts at RAS	\$5,000	20	20



## FUNDRAISING UPDATES

\$15,000,000

\$13,000,000

\$11,000,000

\$9,000,000

\$7,000,000

\$5,000,000

82%

We continue to be encouraged by the community's enthusiastic support of our mission and campaign. To date, we have raised **\$12,325,517** toward our **\$15,000,000** goal. Our Campaign Task Force is actively dedicating their time to helping us raise the remaining **\$2,729,583** in funding needed to successfully close out the campaign.

The *Brick by Brick, Mind by Mind* campaign is at a tipping point where philanthropy can make a profound difference in our ability to contribute to a better Palm Beach County by supporting our students, teachers, and schools.



If you would like to learn more about our initiatives, please feel free to email [Teresa@EducationFoundationPBC.org](mailto:Teresa@EducationFoundationPBC.org).

Thank you for your unwavering support. Together, we will continue to make a positive change in the lives of our future leaders, and community, ***Brick by Brick, Mind by Mind!***

# MILESTONES

The Education Foundation of Palm Beach County, in partnership with the generous support of the community and the Foundation’s philanthropic and corporate partners, is building a 32,000 sq. ft. facility that will serve as an education innovation hub, helping ensure high-quality public education by providing equity and access to resources and innovative programming for students and teachers in Palm Beach County. The new building also includes a training facility to offer professional development for teachers, and will support over 100 of the Foundation’s programs, including the expansion of Red Apple Supplies. Red Apple Supplies is the Foundation’s signature program that serves as a free teacher resource store, equipping teachers with essential resources for their classrooms.



**October 2023**  
Demolition Began



**November 2023**  
Groundbreaking



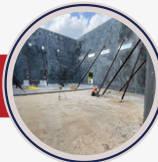
**December 2023**  
Groundbreaking  
Ceremony



**January 2024**  
Foundation Poured



**February 2024**  
Tilt Wall Panels  
Formed



**March 2024**  
Tilt Walls Lifted



**April 2024**  
Framing Complete



**May 2024**  
Topping Out  
Ceremony



**May 2024**  
Exterior Painted



**December 2024**  
Move In  
**January 2025**  
Ribbon Cutting!

## CAMPAIGN PROGRESS

### JANUARY 2023 - SEPTEMBER 2023

SIGNED GROUND LEASE  
SIGNED OWNER'S REP AND CONTRACTOR  
CONTRACTOR SIGNED & HIRED



## CAMPAIGN PROGRESS

### OCTOBER 2023 - JANUARY 2024

DEMOLITION BEGAN  
GROUNDBREAKING / GROUNDBREAKING CEREMONY  
FOUNDATION POURED



## CAMPAIGN PROGRESS

### FEBRUARY 2024 - MAY 2024

*TILT WALL PANELS FORMED & LIFTED  
FRAMING COMPLETE  
TOPPING OUT CEREMONY*








This past year has been marked by inspiring stories of resilience, hope, and positive change as a result of the Foundation's many programs and initiatives.

While we celebrate success, we look toward the future and know there is much more work to be done. Ensuring high-quality public education for students in the School District of Palm Beach County is essential, and our commitment to that work is steadfast. We have ambitious goals to further carry out our mission in the years ahead, and the continued support of our community is pivotal in making these aspirations a reality.

Thank you for your support in carrying out our mission and improving educational access for students and teachers in Palm Beach County.

Join us in building  
**Palm Beach County's future...**  
***Brick by Brick, Mind by Mind***



-  Education Foundation of Palm Beach County: 505 S. Congress Ave., Boynton Beach, FL 33426
-  Red Apple Supplies: 7071 Garden Road, Riviera Beach, FL 33404
-  [EducationFoundationPBC.org/BrickByBrick](https://www.educationfoundationpbc.org/brickbybrick)
-  [Info@EducationFoundationPBC.org](mailto:Info@EducationFoundationPBC.org)
-  561-738-2931

